

LITTLE MACHINE SHOP
3900 VERTICAL MILL WITH BLDC AND
ADDED STEPPER
1 HOUR RUN TIME AT 1090 RPM

Measurements °F

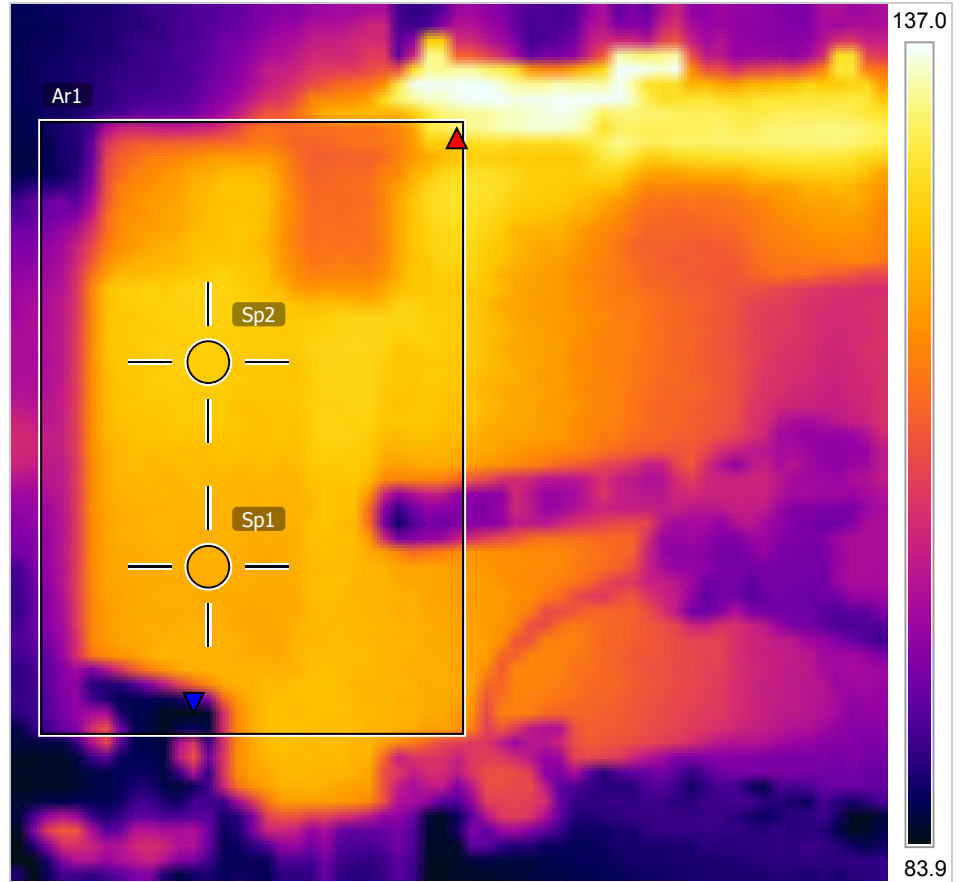
Ar1	Max	129.6
	Min	84.3
	Average	115.6
Sp1		119.2
Sp2		121.4

Parameters

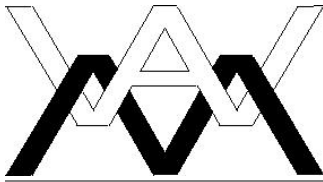
Emissivity	0.6
Refl. temp.	68 °F

1/2/2013 4:31:54 AM

SPINDLE



IR_0005.jpg



LITTLE MACHINE SHOP
3900 VERTICAL MILL WITH BLDC AND
ADDED STEPPER
1 HOUR RUN TIME AT 1090 RPM

Measurements °F

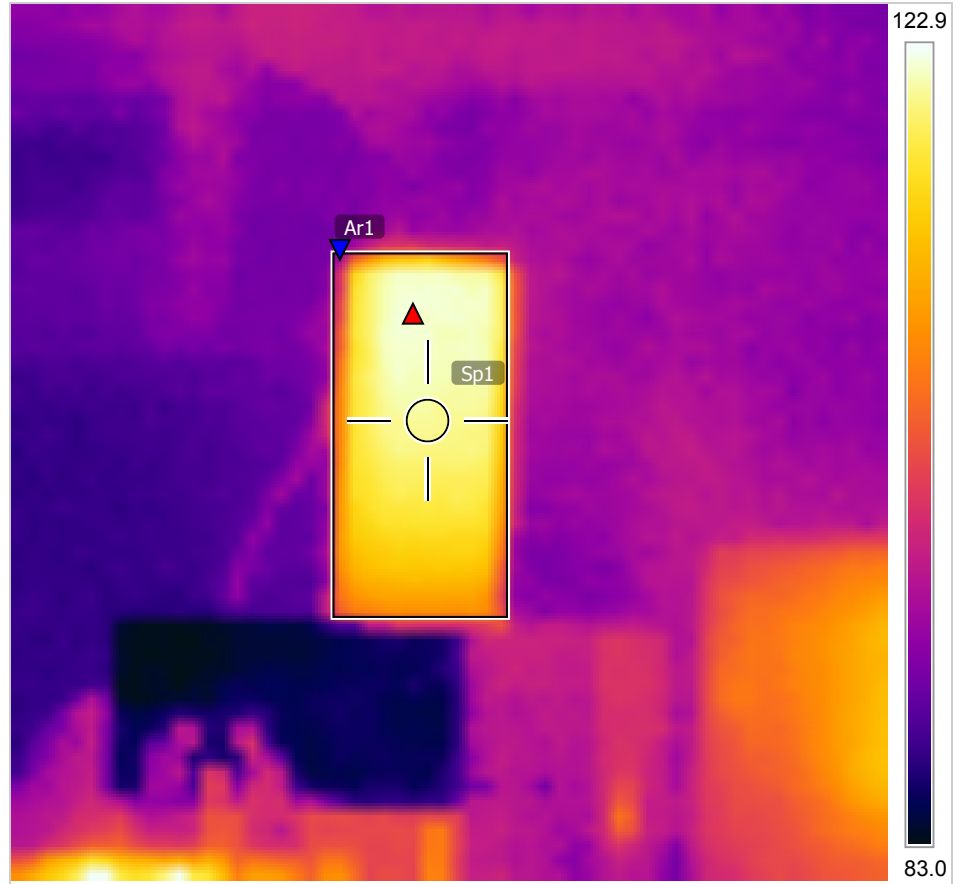
Ar1	Max	121.6
	Min	90.7
	Average	113.6
Sp1		119.8

Parameters

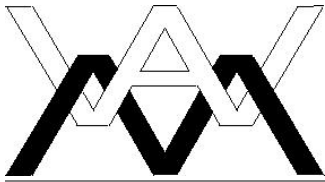
Emissivity	0.6
Refl. temp.	68 °F

1/2/2013 4:32:24 AM

STEPPER



IR_0009.jpg



LITTLE MACHINE SHOP
3900 VERTICAL MILL WITH BLDC AND
ADDED STEPPER
1 HOUR RUN TIME AT 1090 RPM

Measurements °F

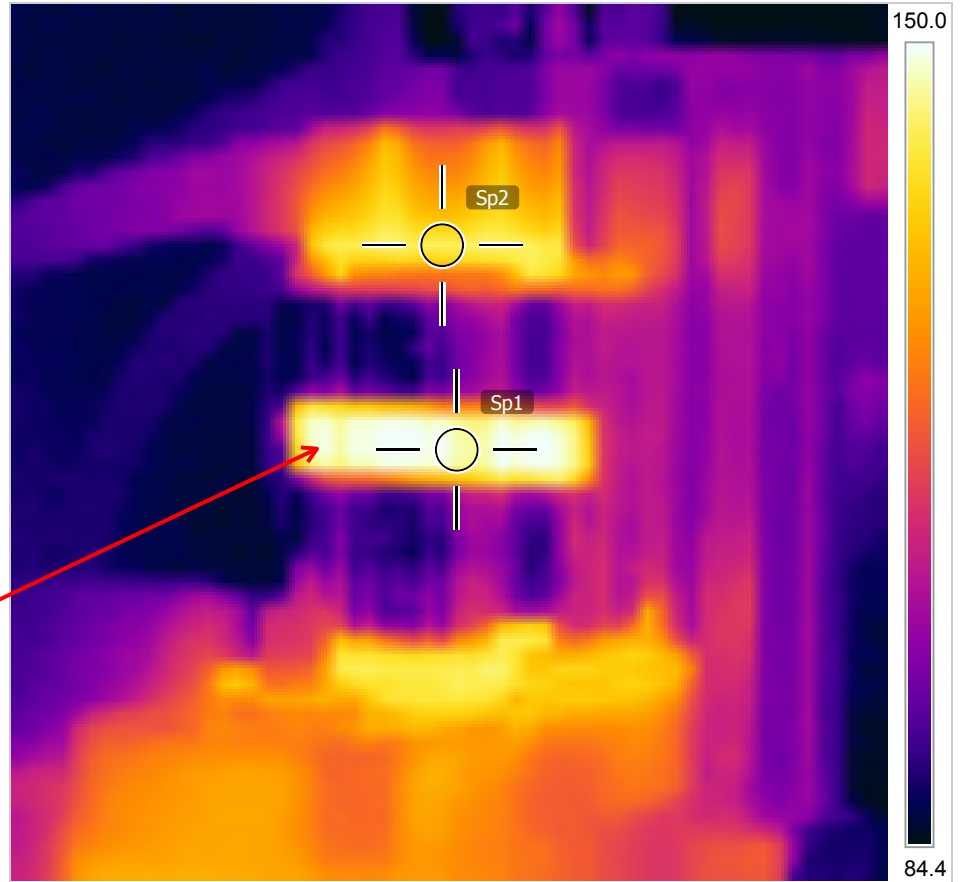
Sp1	146.1
Sp2	138.8

Parameters

Emissivity	0.6
Ref. temp.	68 °F

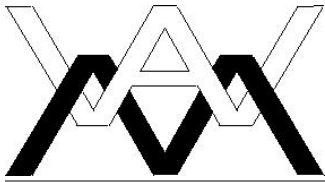
1/2/2013 4:33:05 AM

BLDC MOTOR



BLACK TAPE ADDED FOR
MEASUREMENT

IR_0012.jpg



LITTLE MACHINE SHOP
3900 VERTICAL MILL WITH BLDC AND
ADDED STEPPER
1 HOUR RUN TIME AT 1090 RPM

Measurements °F

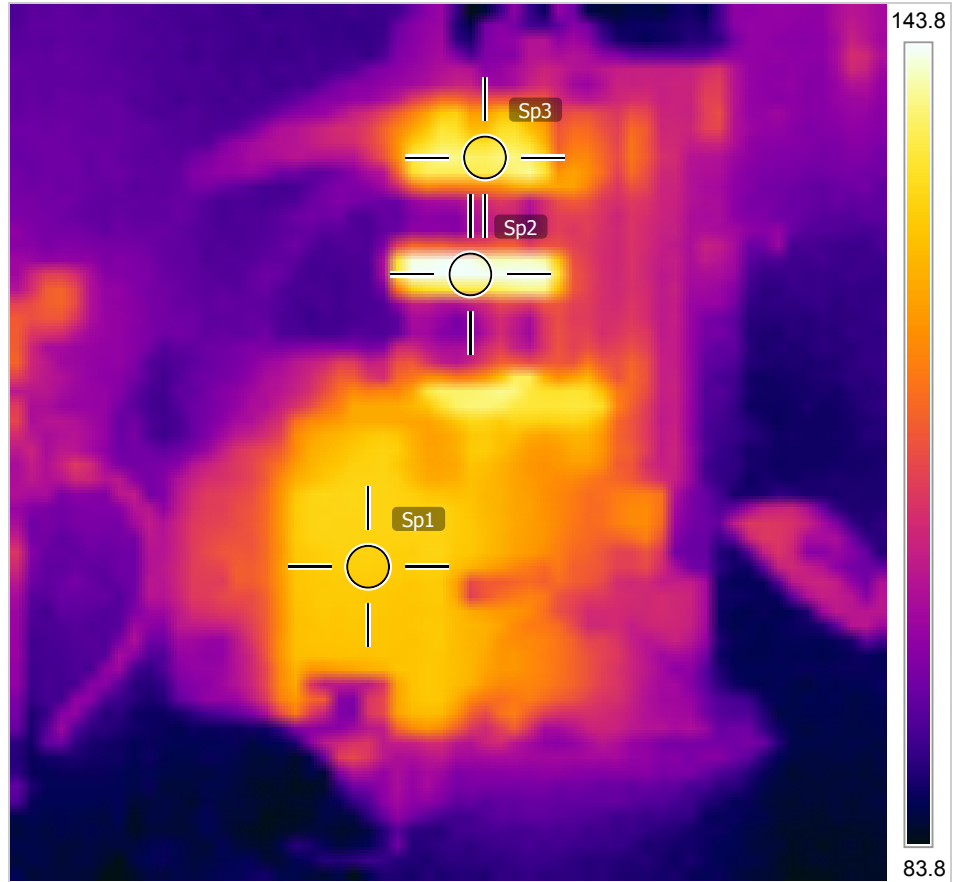
Sp1	121.3
Sp2	147.4
Sp3	131.9

Parameters

Emissivity	0.6
Ref. temp.	68 °F

1/2/2013 4:33:36 AM

OVERALL SPINDLE AND MOTOR



IR_0015.jpg