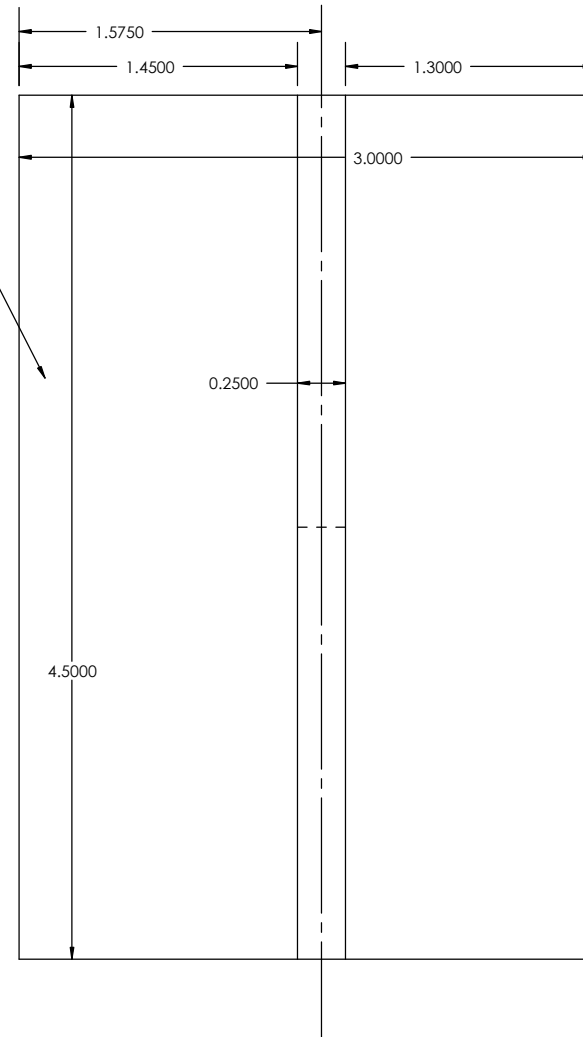


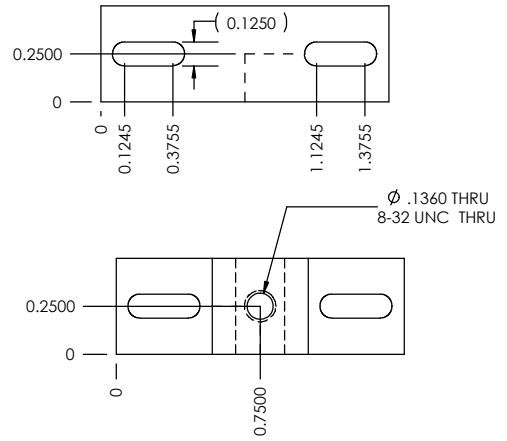
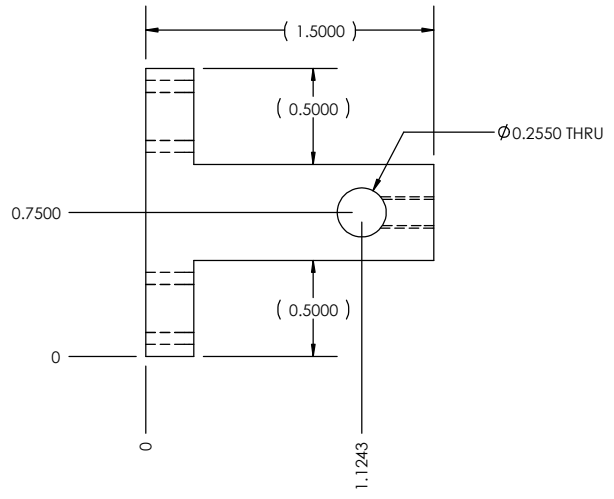
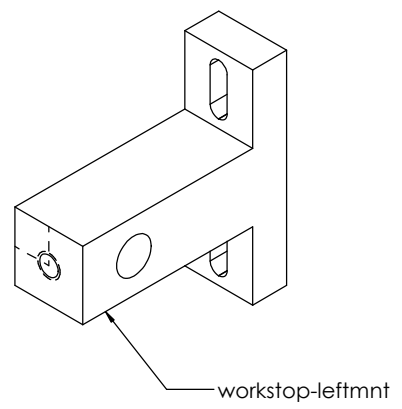
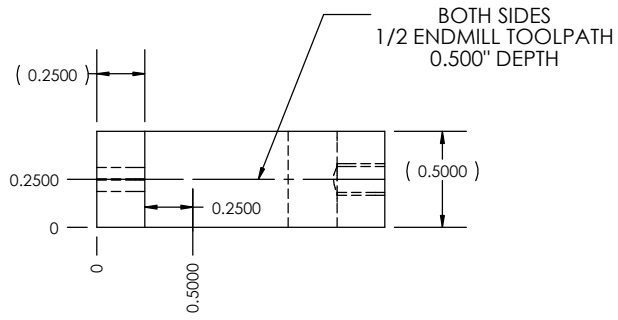
TAG	X LOC	Y LOC	SIZE
A1	0.4950	1.1327	ϕ .0890 THRU ALL 4-40 UNC THRU ALL
A2	1.9950	1.1327	
A3	2.8400	0.3125	
A4	3.8400	0.3125	
B1	3.4388	0.8467	ϕ .1065 THRU ALL 6-32 UNC THRU ALL

STOCK FOR PAGE 1 AND 9
 CUT 3 X 0.25 STOCK TO 4.5; FINISH TO 4.25 LENGTH
 CUT/RIP STOCK TO 1.575
 USE THIS PIECE - FINISH TO 1.45 WIDTH;



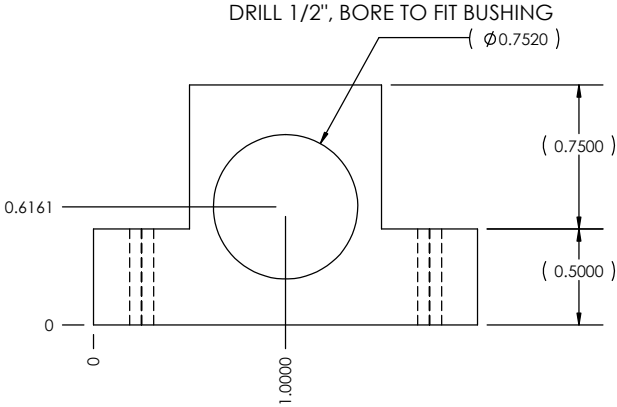
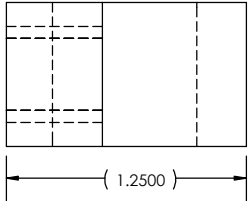
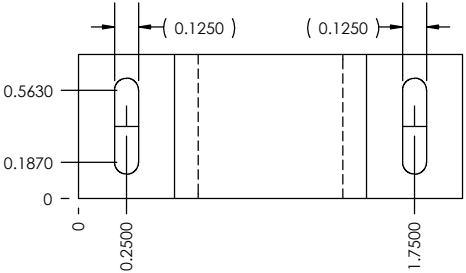
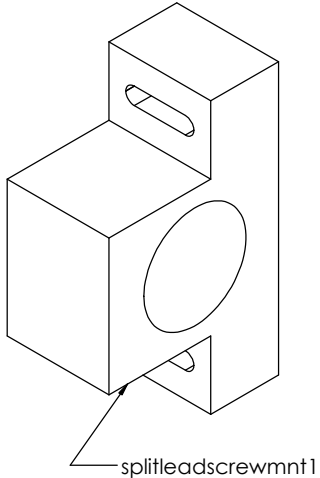
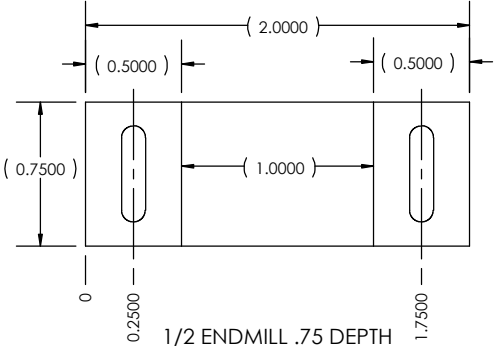
TITLE: DWG. NO. FAB_PARTS_LATHE		
SIZE A	MATERIAL FINISH	REV A
SCALE: 1:1	WEIGHT:	SHEET 1 OF 16

USE 1.5 SQ STOCK - CUT ROUGH TO 0.75", THEN FINISH TO 0.5 THICK



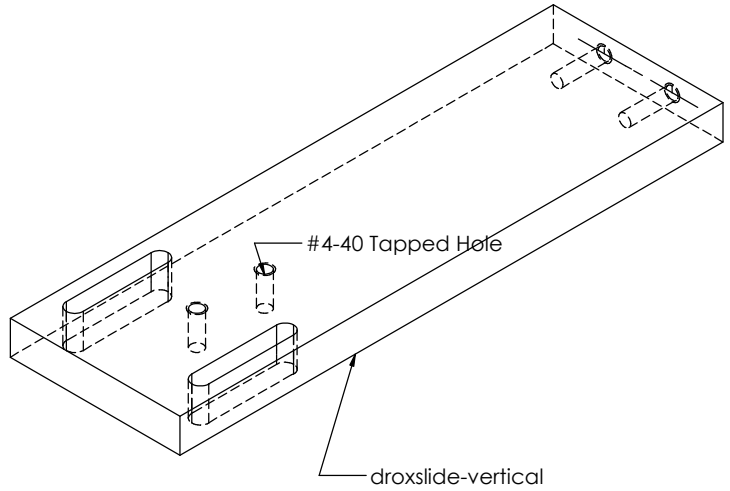
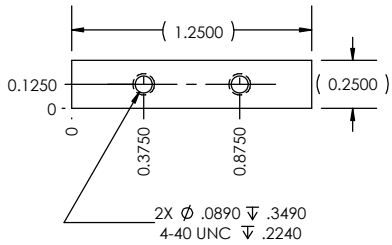
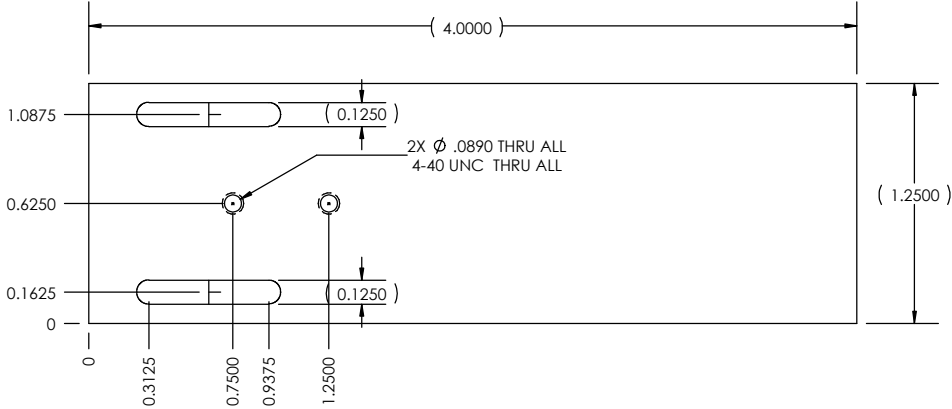
SIZE A	DWG. NO. FAB_PARTS_LATHE	REV A
SCALE: 1:1	WEIGHT:	SHEET 2 OF 16

STOCK = 1.25X0.75 (0.761) - CUT ROUGHT TO 2.25; FINISH STOCK TO 2"



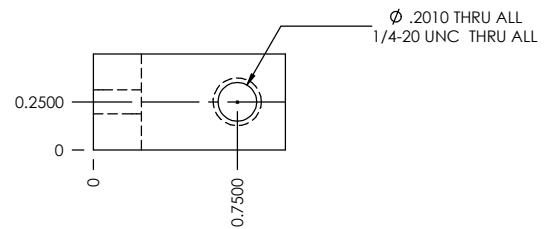
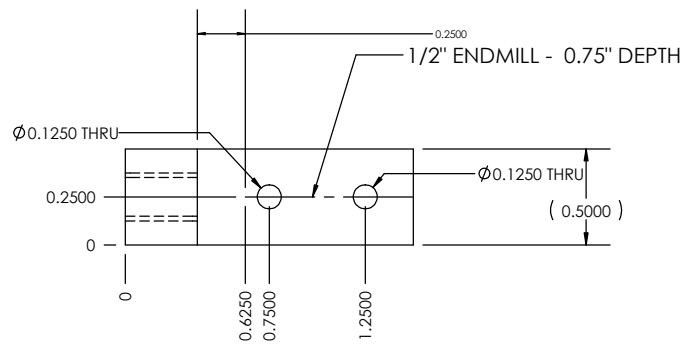
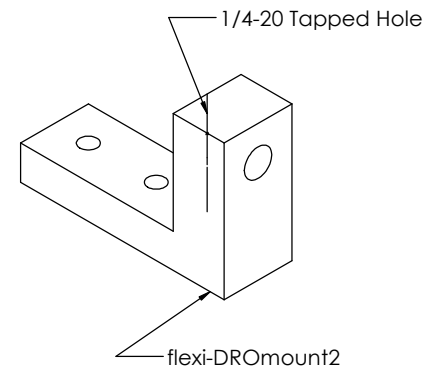
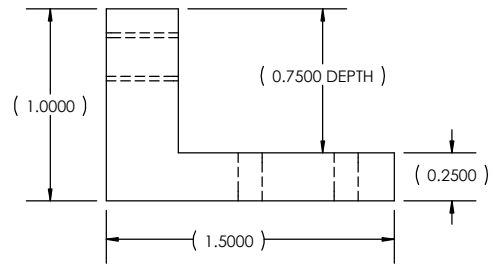
SIZE A	DWG. NO. FAB_PARTS_LATHE	REV A
SCALE: 1:1	WEIGHT:	SHEET 3 OF 16

CUT 2 X 0.25 STOCK TO 4.25 - 4" FINISHED LENGTH
FINISH WIDTH TO 1.25



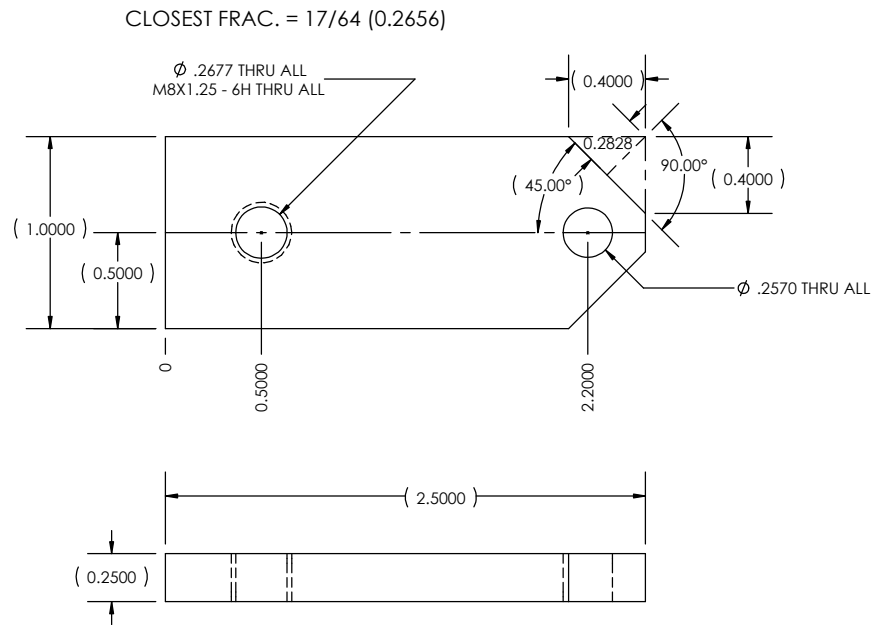
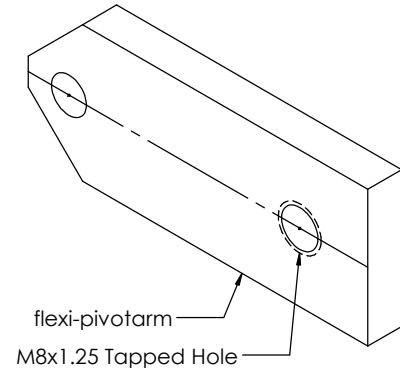
SIZE A	DWG. NO. FAB_PARTS_LATHE	REV A
SCALE: 1:1	WEIGHT:	SHEET 5 OF 16

CUT 1 X 0.5 STOCK TO 1.75 - 1.5 FINISHED LENGTH



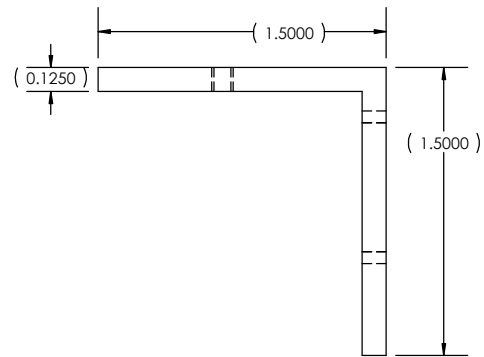
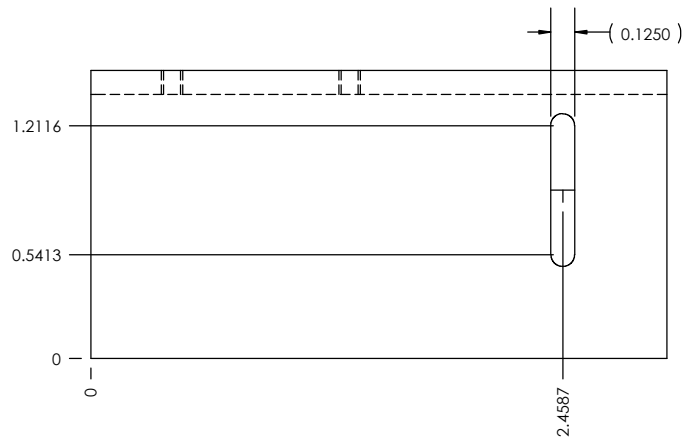
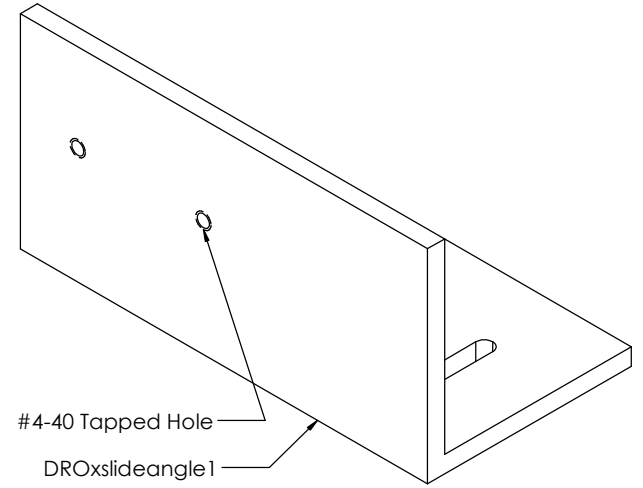
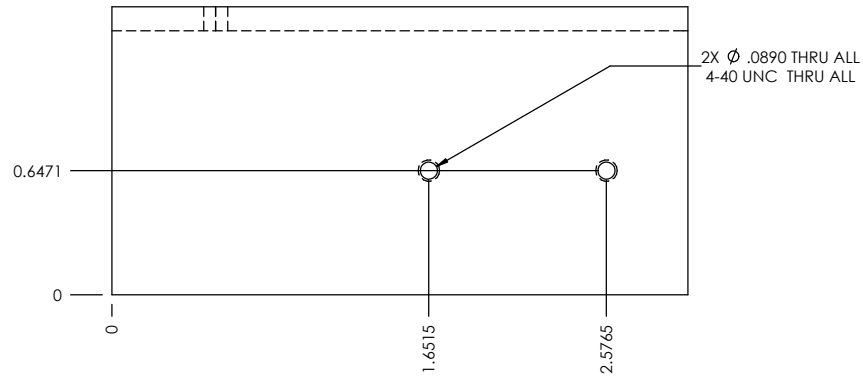
SIZE A	DWG. NO. FAB_PARTS_LATHE	REV A
SCALE: 1:1	WEIGHT:	SHEET 6 OF 16

CUT 1X 0.25 STOCK TO 2.75" - 2.5" FINISHED LENGTH



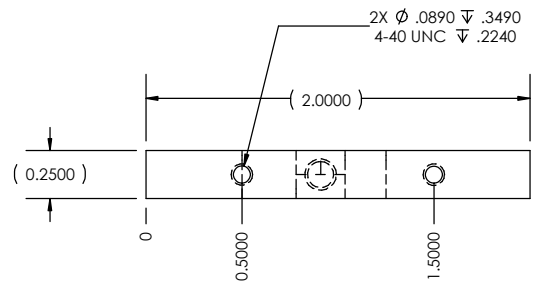
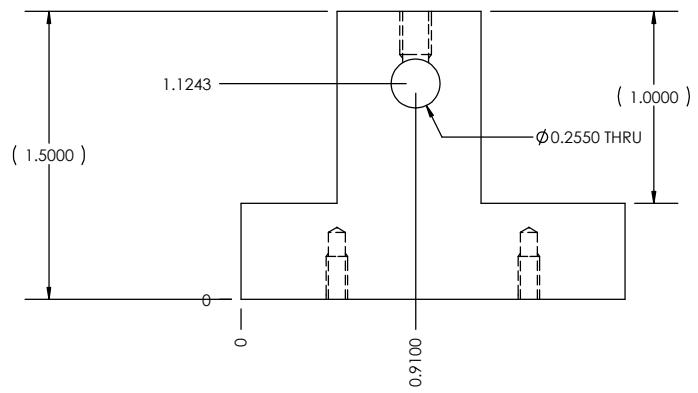
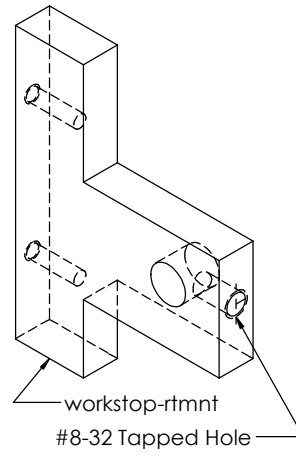
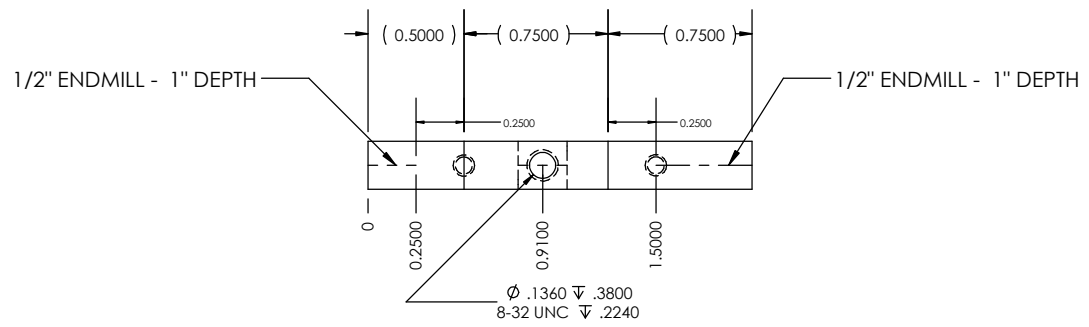
SIZE A	DWG. NO. FAB_PARTS_LATHE	REV A
SCALE: 1:1	WEIGHT:	SHEET 7 OF 16

CUT 1-1/2" X 1/8" ANGLE TO 3.25" - FINISH TO 3"



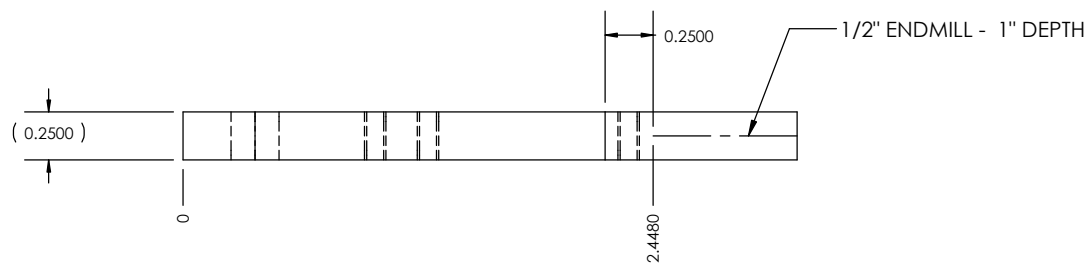
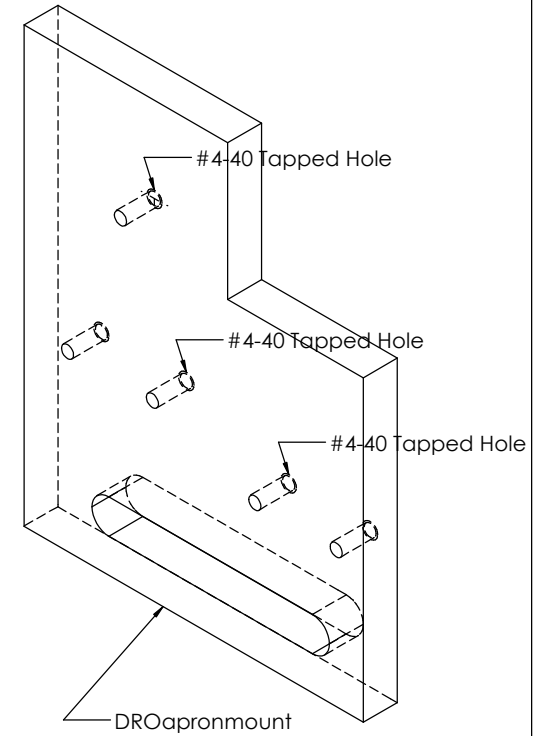
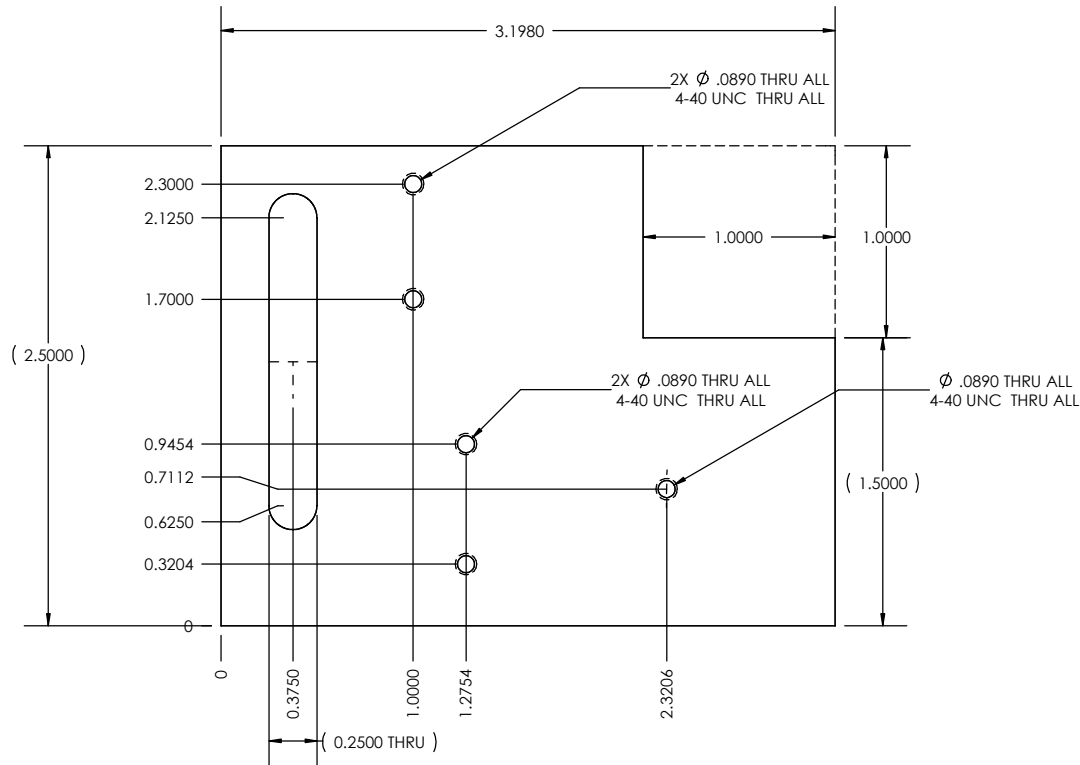
SIZE A	DWG. NO. FAB_PARTS_LATHE	REV A
SCALE: 1:1	WEIGHT:	SHEET 8 OF 16

CUT 2 X 0.25 STOCK TO 1.75
FINISH LENGTH TO 1.5



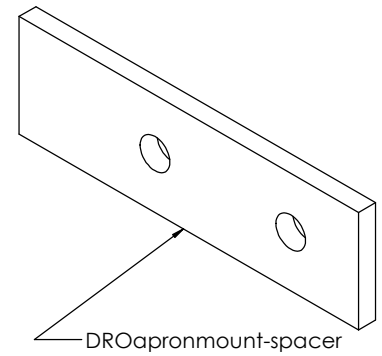
SIZE A	DWG. NO. FAB_PARTS_LATHE	REV A
SCALE: 1:1	WEIGHT:	SHEET 10 OF 16

CUT 3" X 0.25" STOCK TO 3.25 LENGTH
 FINISH TO 3.198 LENGTH
 FINISH TO 2.5 WIDTH

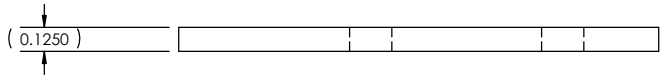
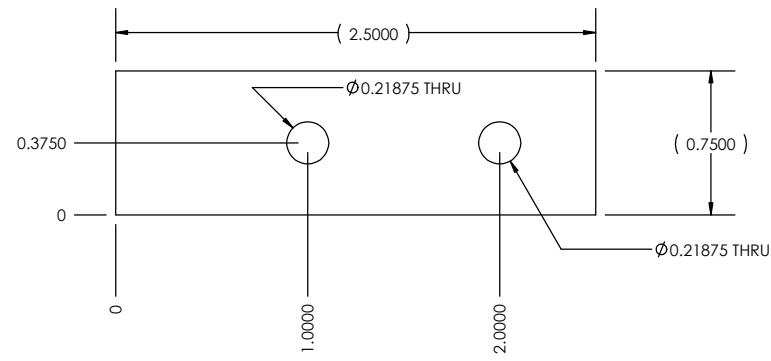


SIZE A	DWG. NO. FAB_PARTS_LATHE	REV A
SCALE: 1:1	WEIGHT:	SHEET 11 OF 16

CUT 3/4 X 1/8 STOCK TO 2.75
FINISH TO 2.5

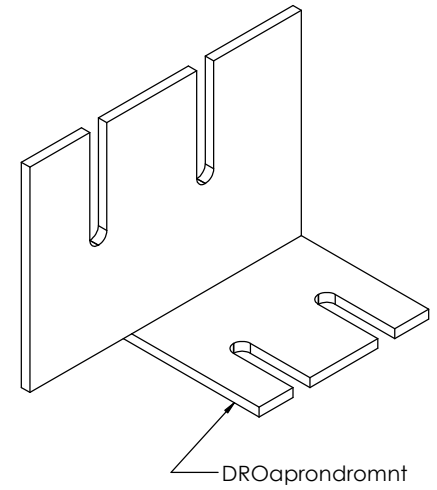
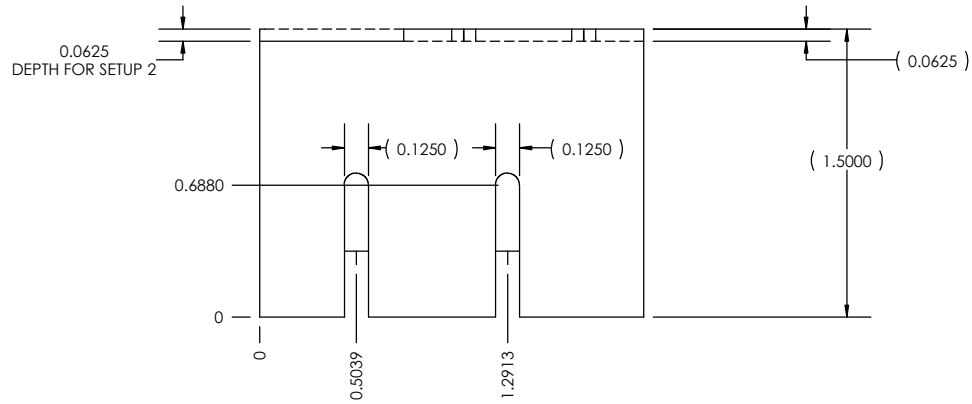


USE 7/32" DRILL

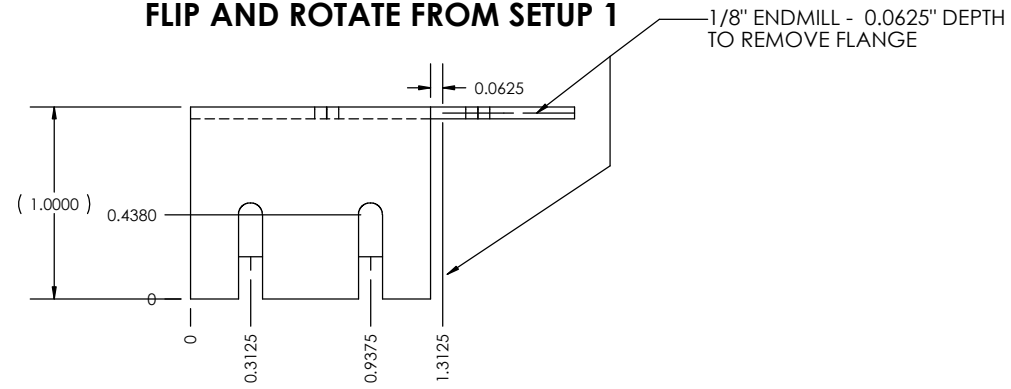


SIZE A	DWG. NO. FAB_PARTS_LATHE	REV A
SCALE: 1:1	WEIGHT:	SHEET 12 OF 16

CUT 1-1/2 X 1/16" ANGLE STOCK TO 2.25 LENGTH
FINISH TO 2" LENGTH

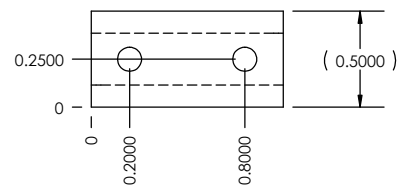
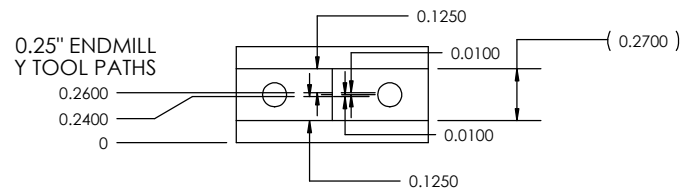
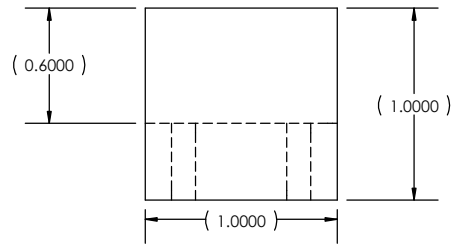
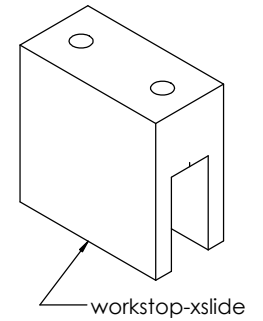


FLIP AND ROTATE FROM SETUP 1



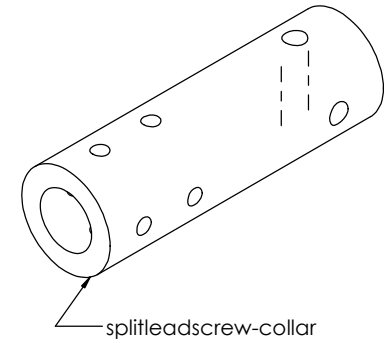
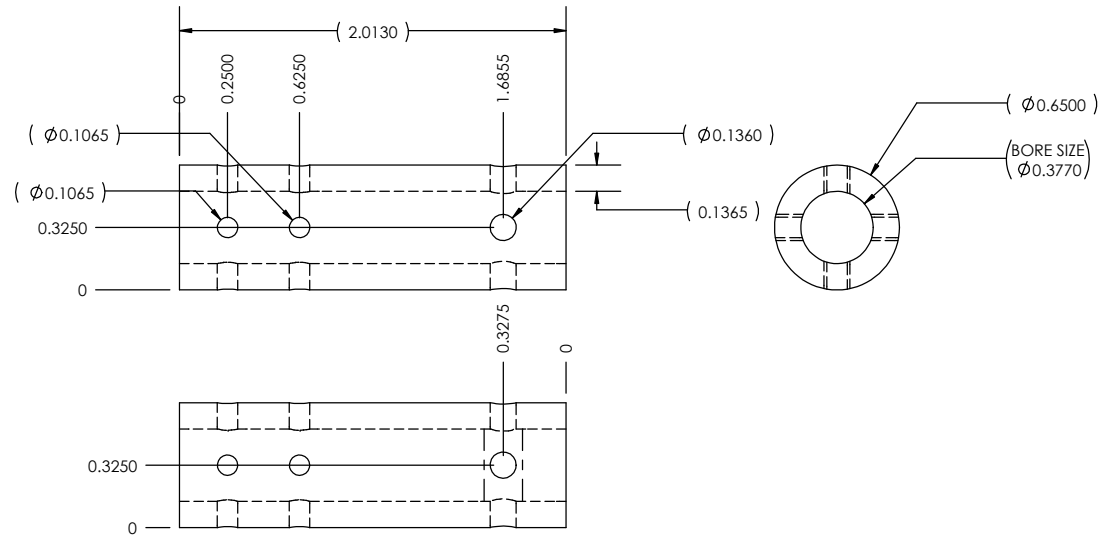
SIZE A	DWG. NO. FAB_PARTS_LATHE	REV A
SCALE: 1:1	WEIGHT:	SHEET 13 OF 16

CUT 1" X 0.5" STOCK TO 1.25 LENGTH
FINISH TO 1" LENGTH

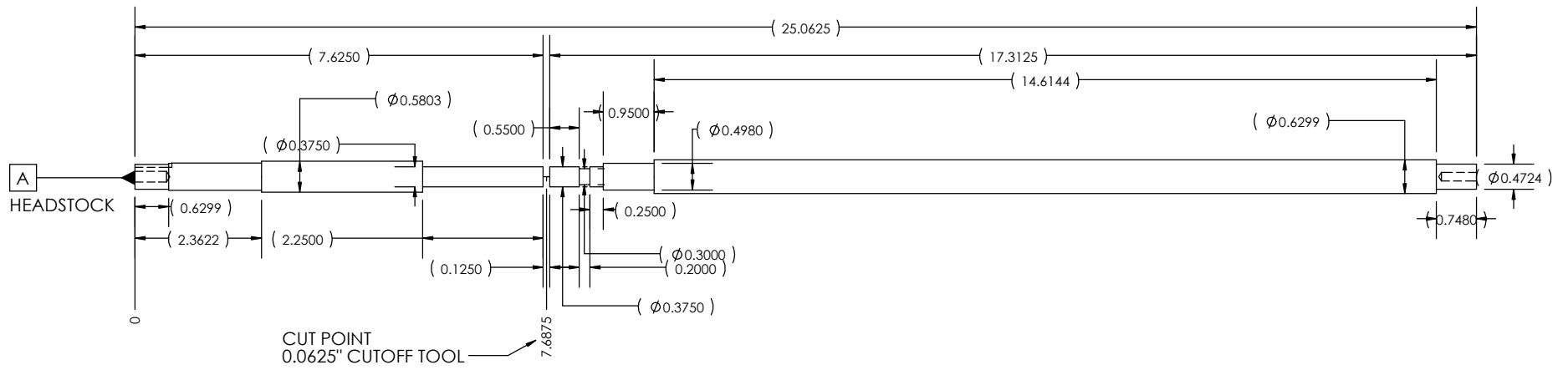


SIZE A	DWG. NO. FAB_PARTS_LATHE	REV A
SCALE: 1:1	WEIGHT:	SHEET 14 OF 16

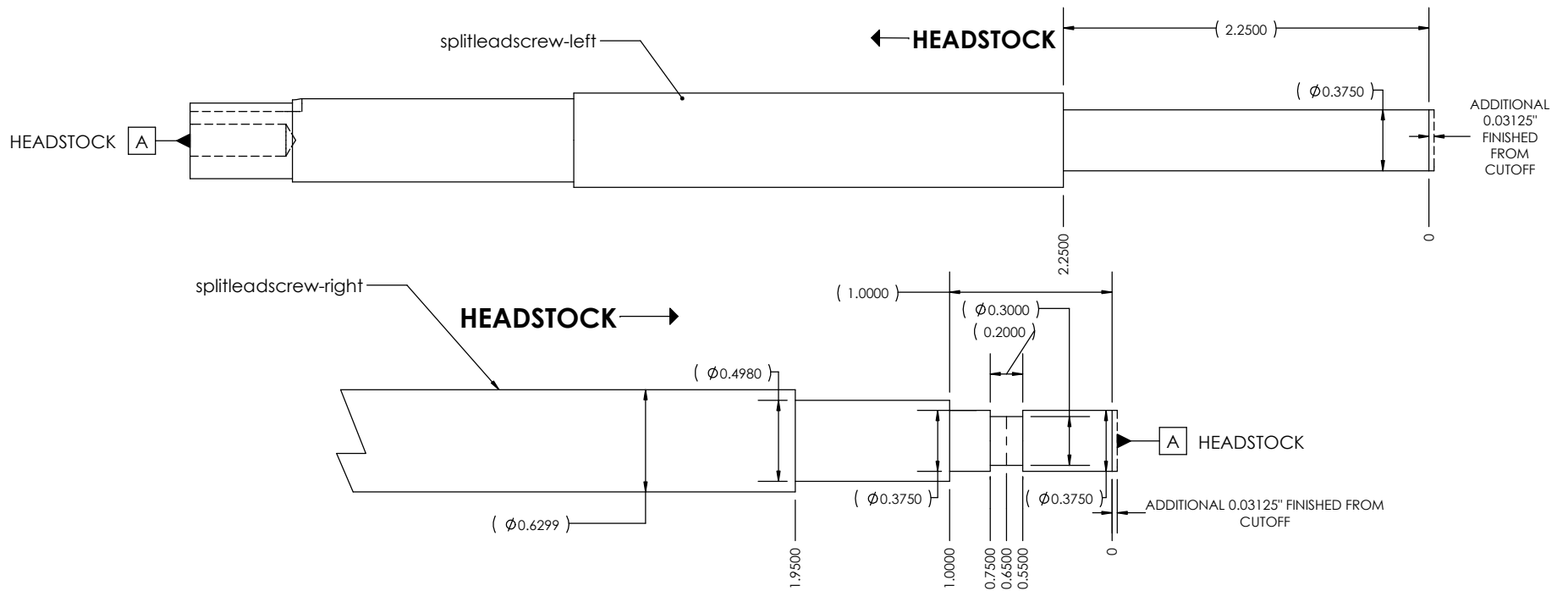
CUT 7/8" ROUND TO 3" LENGTH
 FINISH ON LATHE TO 2.1 LENGTH
 FINISH TO 0.7" OD



SIZE A	DWG. NO. FAB_PARTS_LATHE	REV A
SCALE: 1:1	WEIGHT:	SHEET 15 OF 16



NOTE:
SHAFT LOADED THRU CHUCK →



SIZE A	DWG. NO. FAB_PARTS_LATHE	REV A
SCALE: 1:1	WEIGHT:	SHEET 16 OF 16